

# TAMPA AREA ECONOMIC SUMMARY

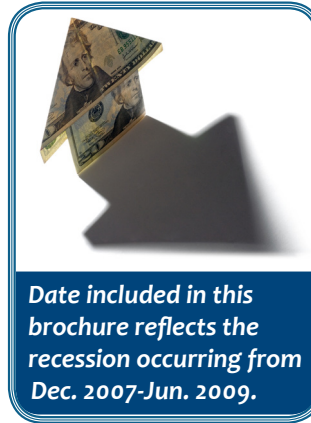
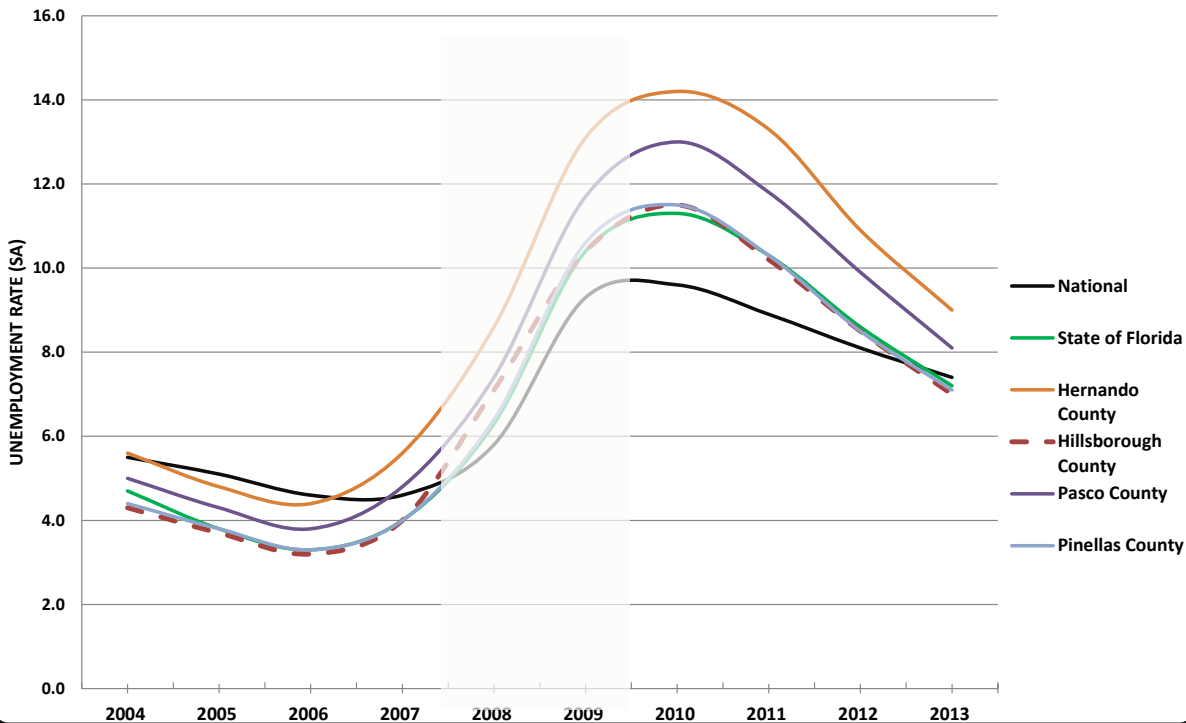
This summary presents a sampling of economic information and indicators for both Hillsborough County and the Tampa Bay Metropolitan Statistical Area (MSA). These economic indicators provide perspective on past economic performance as well as indicators for possible future performance. The goal of this report is to identify the smallest political jurisdiction and if data at the MSA level can be broken down into its respective counties, that has been done. Alongside the use of the Tampa MSA, comparisons to other Sun Belt Cities have been made to highlight trends and differences.

## PERCENT UNEMPLOYMENT: YEARLY AVERAGE (2004-2013)

	2004	2005	2006	2007	2008	2009	2010	2011	2012	2013
<b>JURISDICTION</b>										
National	5.5%	5.1%	4.6%	4.6%	5.8%	9.3%	9.6%	8.9%	8.1%	7.4%
State of Florida	4.7%	3.8%	3.3%	4.0%	6.3%	10.4%	11.3%	10.3%	8.6%	7.2%
Hernando County	5.6%	4.8%	4.4%	5.6%	8.6%	13.1%	14.2%	13.2%	10.9%	9.0%
Hillsborough County	4.3%	3.7%	3.2%	4.0%	7.1%	10.4%	11.5%	10.2%	8.5%	7.0%
Pasco County	5.0%	4.3%	3.8%	4.8%	7.4%	11.7%	13.0%	11.8%	9.9%	8.1%
Pinellas County	4.4%	3.8%	3.3%	4.0%	6.4%	10.6%	11.5%	10.3%	8.5%	7.1%

Source: Florida Department of Economic Opportunity, Local Area Unemployment Statistics, Statewide and All Areas: 2004-2012. <http://www.floridajobs.org/labor-market-information/data-center/statistical-programs/local-area-unemployment-statistics>

## PERCENT UNEMPLOYMENT: YEARLY AVERAGE



**THE PLANNING COMMISSION**

## LABOR FORCE TRENDS IN HILLSBOROUGH COUNTY

	2004	2005	2006	2007	2008	2009	2010	2011	2012	2013
Labor Force	565,184	565,617	578,731	597,742	598,657	597,220	604,896	620,466	629,444	634,531
Employment	540,761	544,731	559,983	573,816	560,753	534,961	535,621	557,138	576,055	589,954
Unemployment	24,423	20,886	18,748	23,656	37,904	62,259	69,275	63,328	53,389	44,577
Unemployment Rate	4.3%	3.7%	3.2%	4.0%	6.3%	10.4%	11.5%	10.2%	8.5%	7.0%

Source: Florida Department of Economic Opportunity, Local Area Unemployment Statistics, Statewide and All Areas: 2004-2012. <http://www.floridajobs.org/labor-market-information/data-center/statistical-programs/local-area-unemployment-statistics>

## HILLSBOROUGH AREA EMPLOYMENT (NUMBERS IN THOUSANDS)

Industry	2013 AVERAGE	Average annual change: 2012 to 2013	
		Numeric change	Percent change
Natural resources and mining	10.5	0.4	3.4%
Construction	29.7	2.5	8.3%
Manufacturing	24.3	0.5	2.0%
Trade, transportation & utilities	117.8	2.1	1.8%
Information	16.6	0.3	1.7%
Financial activities	59.7	2.8	4.7%
Professional & business services	110.6	3.1	2.8%
Education & health services	123.1	3.0	2.4%
Leisure & hospitality	69.1	3.1	4.5%
Other services	17.2	0.4	2.6%
Public administration	25.1	-0.4	-1.8%
Unclassified	0.1	0.0	-2.9%

Sources: Florida Department of Economic Opportunity, Labor Market Statistics Center, Quarterly Census of Employment and Wages, 2012 Annual Data; 2013 Quarterly Data. Compiled by the Hillsborough County City-County Planning Commission.

### HILLSBOROUGH COUNTY: WHERE WORKERS LIVE (ALL JOBS)

	Count
Tampa city, FL	94,074
Brandon, FL	31,726
Town 'n' Country, FL	21,684
Riverview, FL	20,643
St. Petersburg, FL	15,597
Carrollwood, FL	11,164
Valrico, FL	10,396
Wesley Chapel, FL	9,987
Egypt Lake-Leto, FL	9,757
Lake Magdalene, FL	9,013
All other locations	355,641
<b>Total all jobs</b>	<b>589,682</b>
Total working in Hills. but living elsewhere	<b>42.1%</b>
Total working & living in Hills.	<b>57.9%</b>

Source: U.S. Census Bureau, Longitudinal Employer-Household Dynamics, Hillsborough County Inflow-Outflow Analysis, 2011.

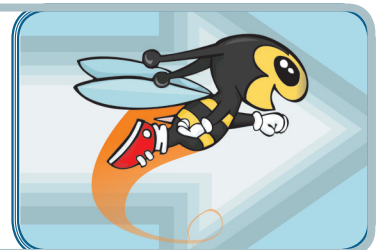
### HOURLY WAGES FOR SELECTED OCCUPATIONS

	Average Wage
Accountants and auditors	\$31.71
Librarians	\$26.78
Registered nurses	\$30.28
Customer service representatives	\$14.90
Construction laborers	\$12.92
Surgeons	\$103.26
Real estate sales agents	\$18.11
Clergy	\$21.38
Air traffic controllers	\$56.38
Roofers	\$15.51
Chief executives	\$96.90
Dishwashers	\$8.96
Preschool teachers	\$12.08

Source: Bureau of Labor Statistics, May 2013 Metropolitan and Nonmetropolitan Area Occupational Employment and Wage Estimates for the Tampa-St.Petersburg-Clearwater, Florida Metropolitan Area.

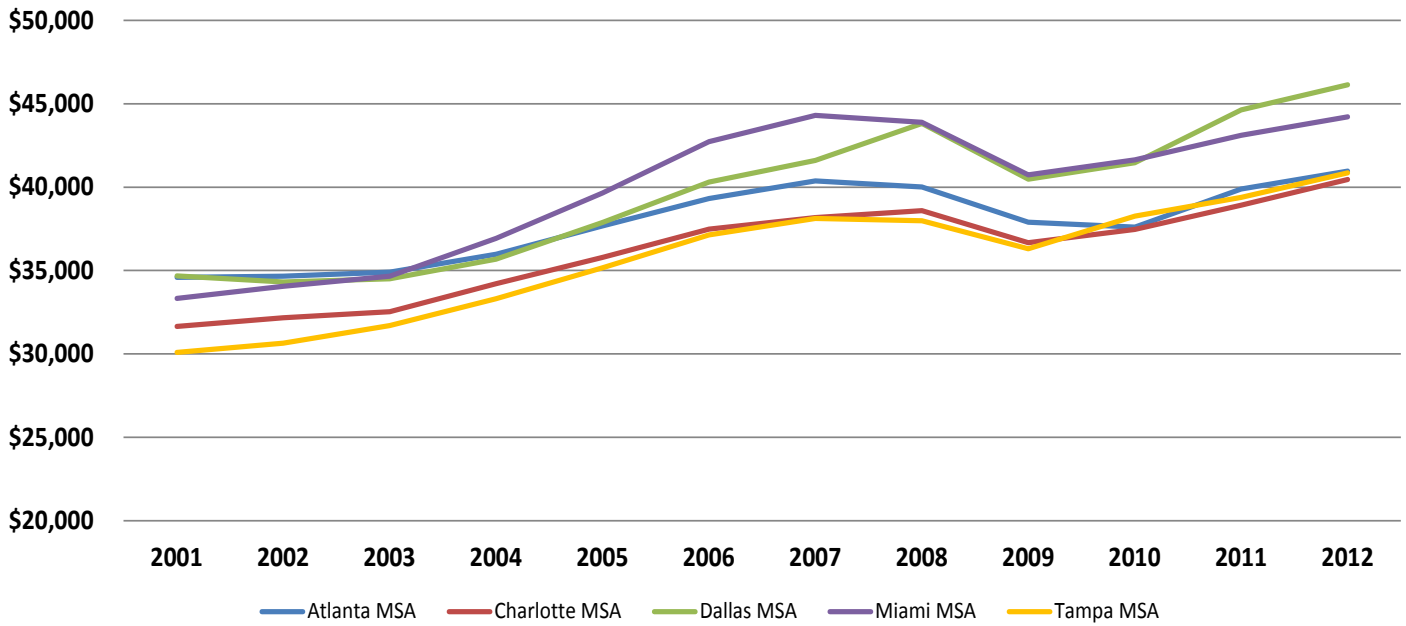
# 68%

Percent of county residents living and working in the county.



## PERSONAL INCOME SUMMARY: PER CAPITA PERSONAL INCOME

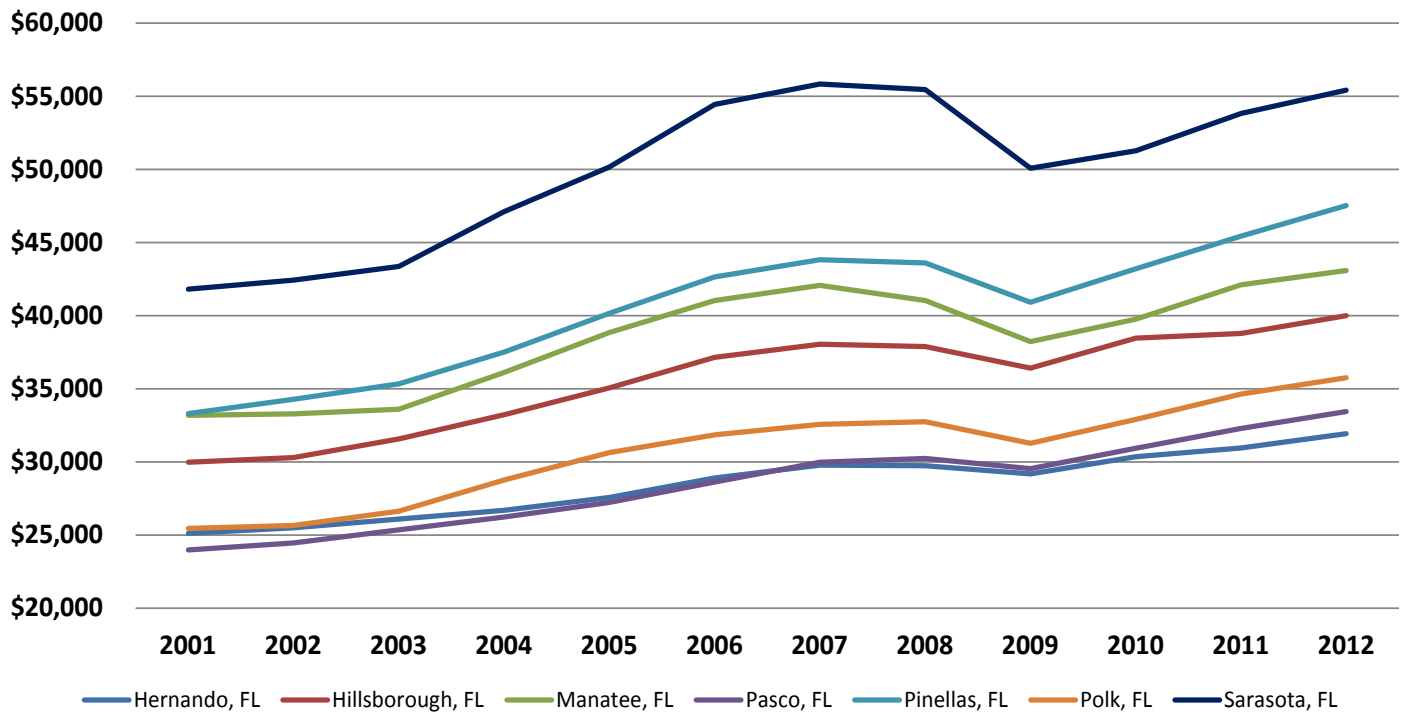
(breakdown by select Metropolitan Statistical Areas)



U.S. Department of Commerce, Bureau of Economic Analysis, Regional Data: Table CA1-3: Personal Income Summary, Per Capital Personal Income. Metropolitan Statistical Areas. Last updated May 30, 2014.

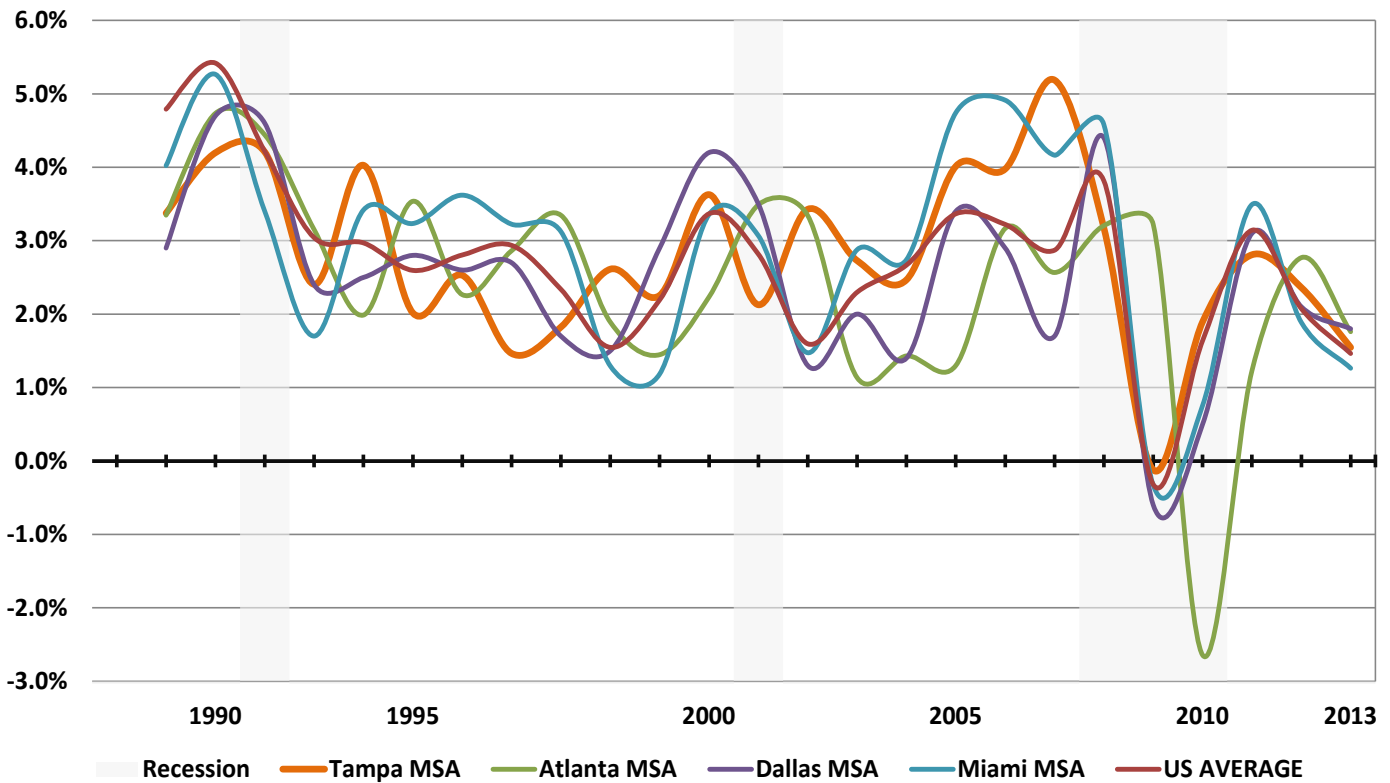
## PERSONAL INCOME SUMMARY: PER CAPITA PERSONAL INCOME

(BREAKDOWN BY TAMPA METROPOLITAN STATISTICAL AREA COUNTIES)



U.S. Department of Commerce, Bureau of Economic Analysis, Regional Data: Table CA1-3: Personal Income Summary, Per Capital Personal Income. Metropolitan Statistical Areas. Last updated May 30, 2014.

## CONSUMER PRICE INDEX FOR SELECTED METROPOLITAN STATISTICAL AREAS PERCENT YEAR-TO-YEAR CHANGE



Federal Reserve Bank of St. Louis, Federal Reserve Economic Data, Annual Consumer Price Index (Not Seasonally Adjusted). Compiled by the Planning Commission.

## CONSUMER CONFIDENCE INDEX: HILLSBOROUGH COUNTY

	Jan. 2013	Feb. 2013	Mar. 2013	Apr. 2013	May 2013	Jun. 2013	Jul. 2013	Aug. 2013	Sept. 2013	Oct. 2013	Nov. 2013	Dec. 2013
Florida	75	74	76	79	81	82	77	77	78	71	77	77
Men	75	72	78	77	82	84	79	76	82	72	82	79
Women	74	75	75	81	79	80	74	78	74	71	72	75
Under age 60	80	76	77	87	85	91	80	81	82	79	79	84
Over age 60	72	76	75	72	78	75	75	73	74	65	77	72
Income under \$30,000	74	73	67	61	73	75	75	68	69	62	65	71
Income over \$30,000	74	75	81	85	88	87	87	80	82	76	83	78

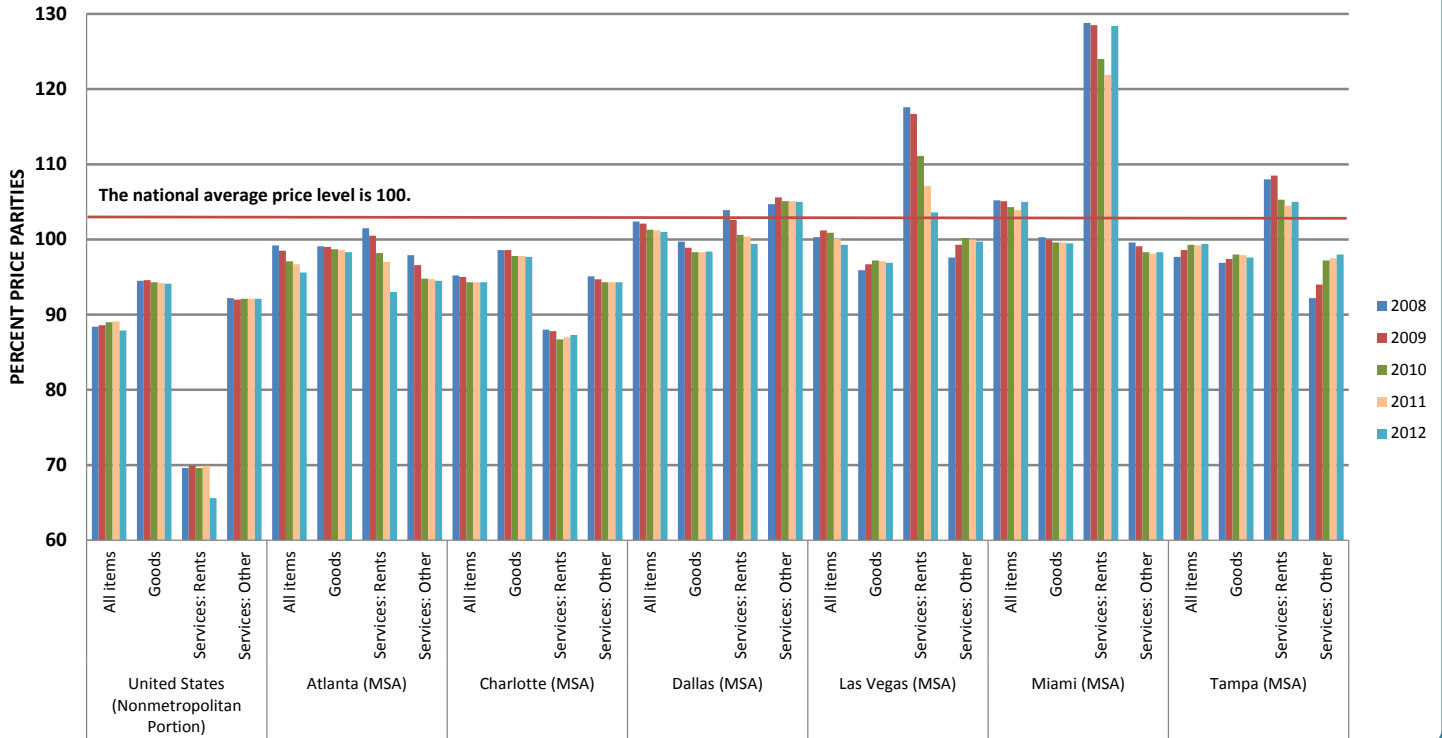
Source: University of Florida, Warrington College of Business Administration, Bureau of Economic and Business Research, Florida Consumer Confidence Index. <http://www.bebr.ufl.edu/cci>

**NOTE:** The Consumer Confidence Index (CCI) is an indicator of consumer's perception of the economy and how they are expressing confidence through their spending choices and/or savings and investments. The lowest index possible is a 2; the highest is 150.



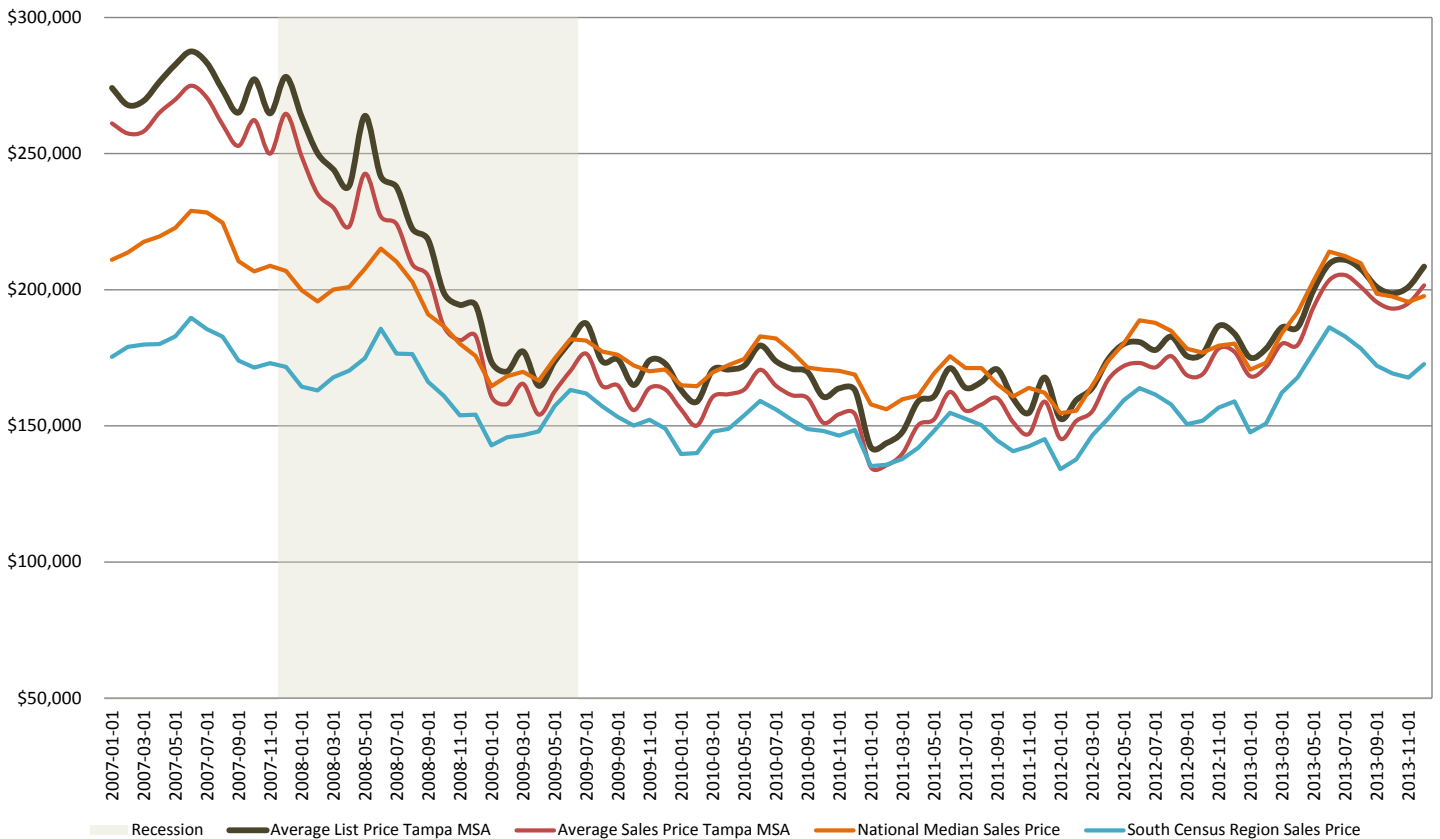
## REGIONAL PRICE PARITIES: SELECT METROPOLITAN STATISTICAL AREAS & THE UNITED STATES

*(Regional Price Parities are regional price levels expressed as a percentage of the overall national price level for a given year.)*



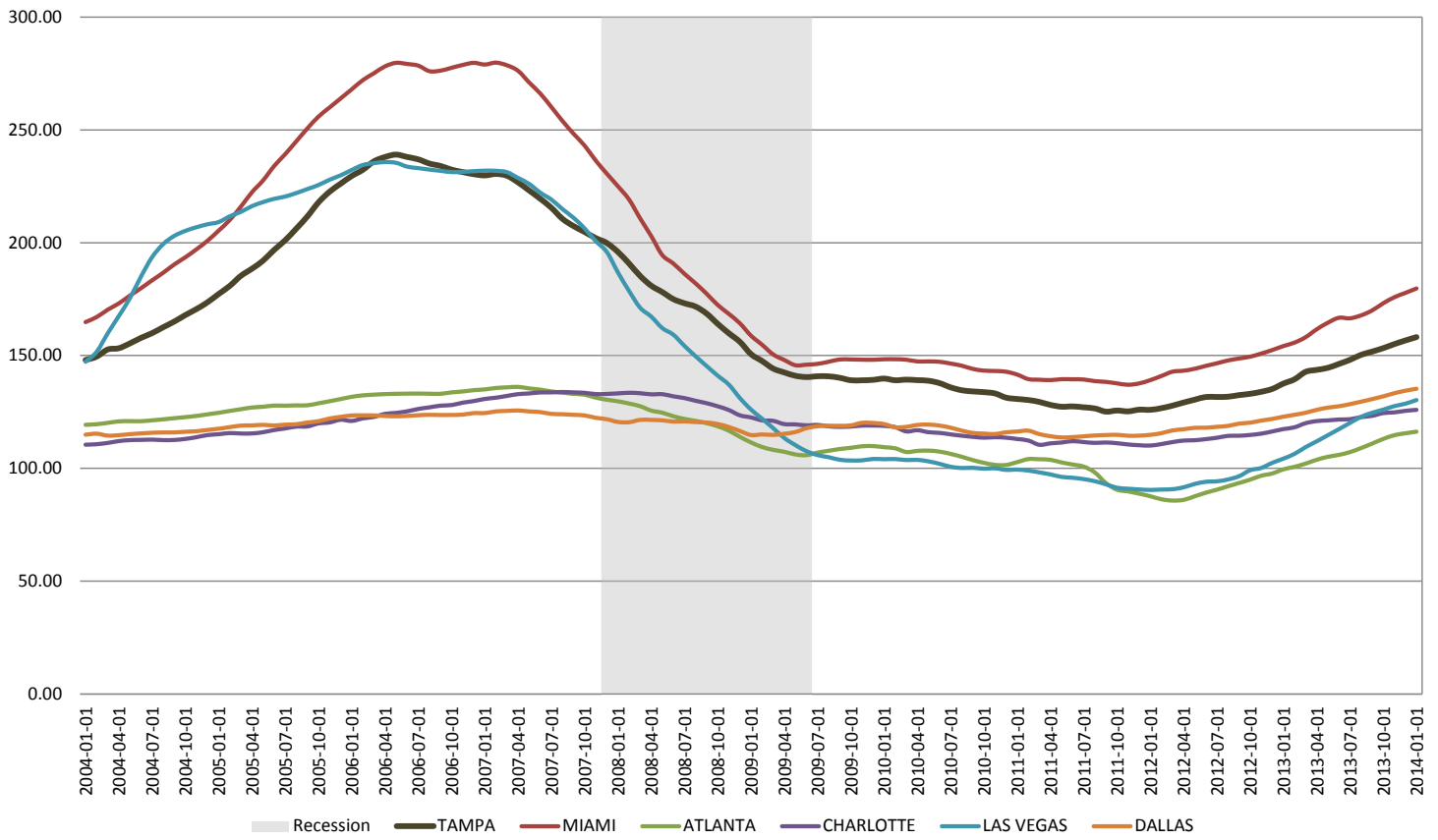
U.S. Department of Commerce, Bureau of Economic Analysis, *Regional Price Parities by Select Metropolitan Areas and the United States excluding all Metropolitan Areas, 2008-2012.* <http://www.bea.gov/itable/>

## MEDIAN SALES PRICES OF EXISTING HOMES (2007-2013)



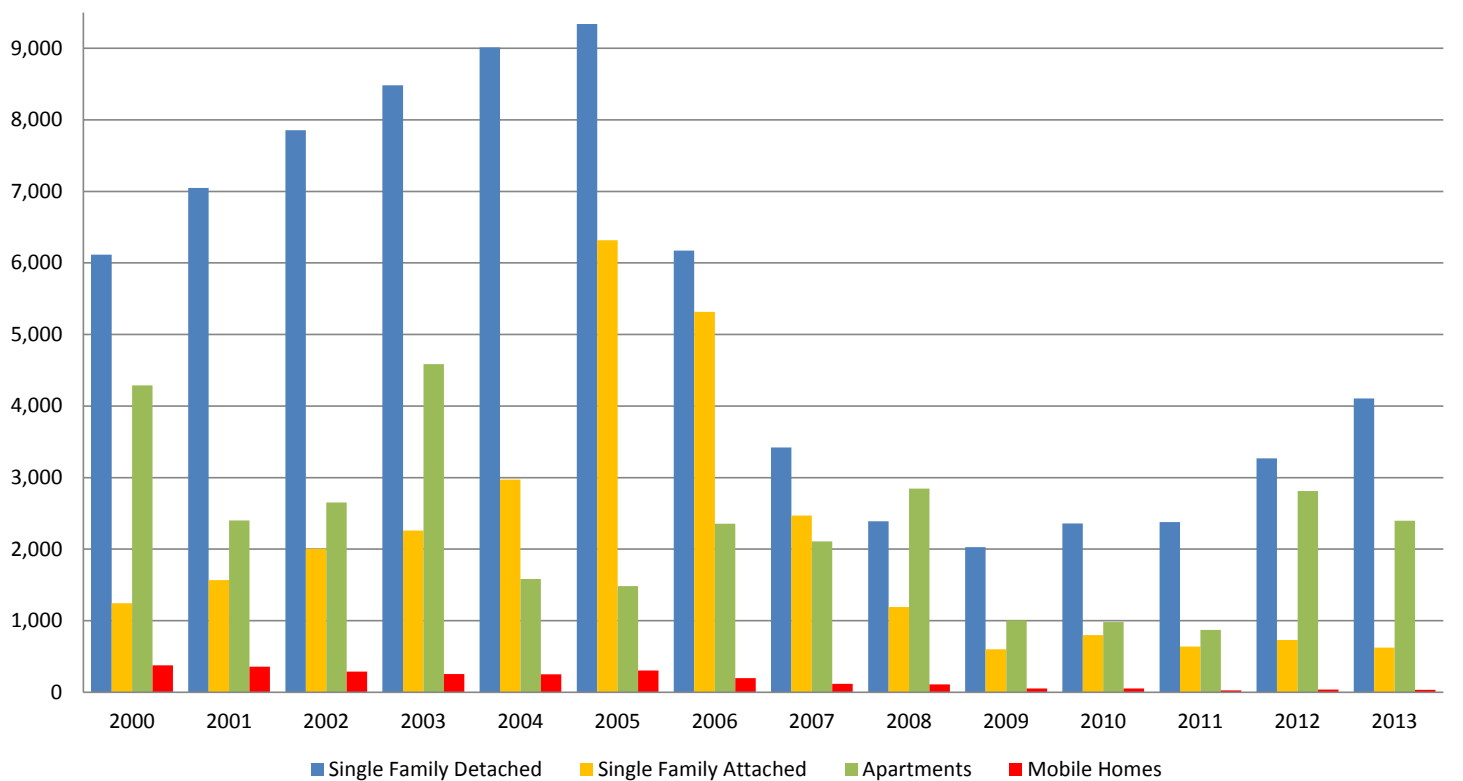
Sources: Greater Tampa Bay Association of Realtors®, *Four Year Sales and Inventory History 2006-2010*; *Four Year Sales and Inventory History 2010-2014.* Federal Reserve Bank of St. Louis, *Federal Reserve Economic Data*, National Association of Realtors, *National Median Sales Price, 2007-2013*; South Census Region Sales Price.©

### CASE-SCHILLER HOUSING PRICE INDEX: SELECTED SUNBELT CITIES (2004-2014)



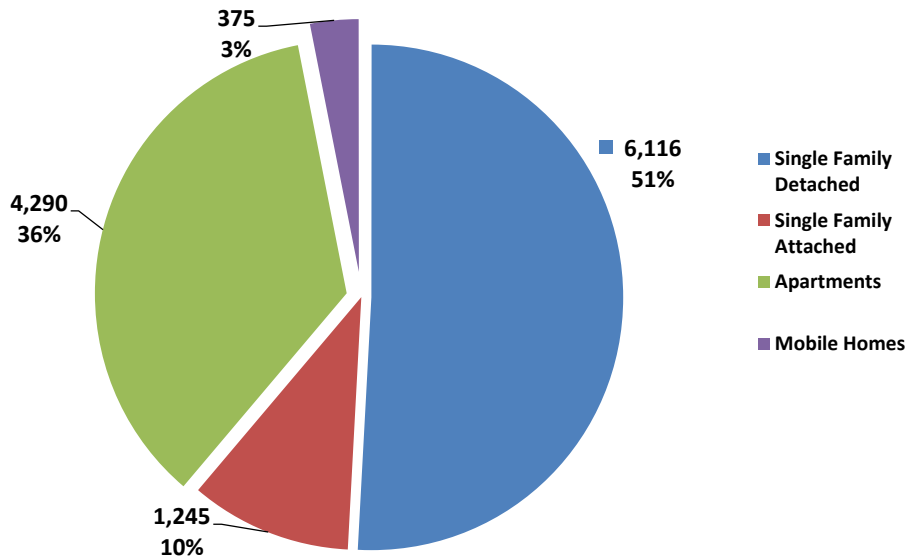
Sources: Federal Reserve Bank of St. Louis, Federal Reserve Economic Data, Case-Schiller Housing Price Index (Seasonally Adjusted). Compiled by the Planning Commission.

### RESIDENTIAL UNITS PERMITTED ANNUALLY BY HOUSING TYPE

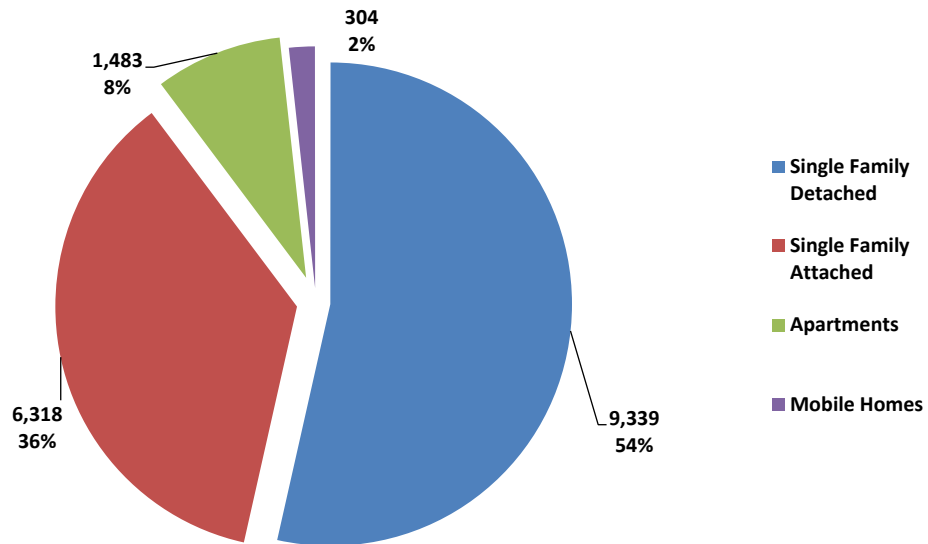


Sources: Hillsborough County City-County Planning Commission, Annual Permit Activity: 2000-2013.

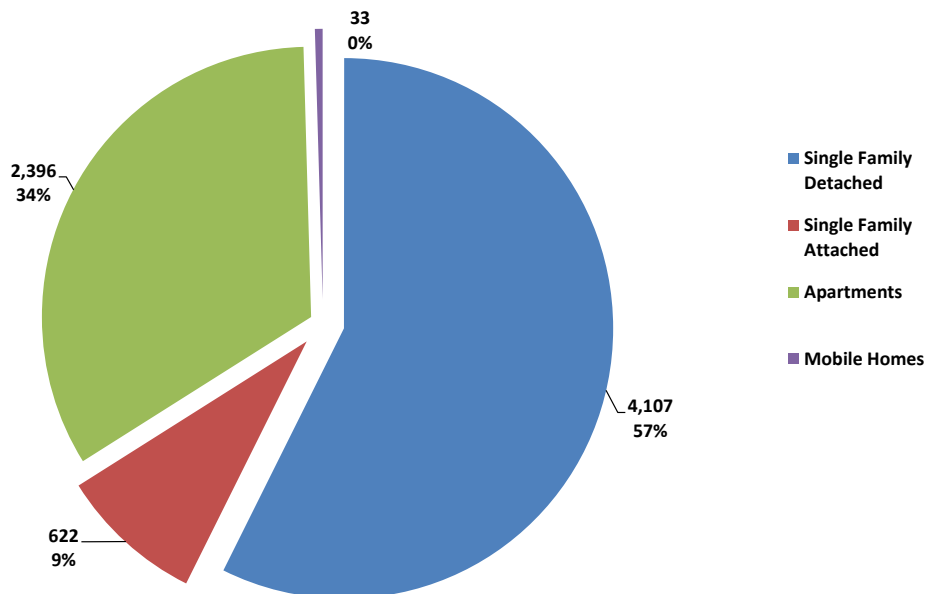
**RESIDENTIAL PERMITS ISSUED BY TYPE (2000)**



**RESIDENTIAL PERMITS ISSUED BY TYPE (2005)**



**RESIDENTIAL PERMITS ISSUED BY TYPE (2013)**



Sources: Hillsborough County City-County Planning Commission, Annual Permit Activity: 2000-2013.